

Pacific Cabinets, Inc.

Ferdinand, Idaho

TPM Member since October 1999



Pacific Cabinets, Inc. (PCI) began 39 years ago with the desire to provide more job options to a local farming and logging community in north-central Idaho. The rural location in Ferdinand, Idaho doesn't prevent it from staying on top of the latest industry trends and leading technology. Instead, it equips the company with employees who value hard work and craftsmanship. It is because of these dedicated employees and its continuing commitment to implement the latest technologies that it has persevered despite a tough economy.

Pacific Cabinets was founded on the premise of employing people from its local communities. In an effort to continue to employ people from local communities, PCI has teamed with the Idaho Department of Labor, CEDA, and local school districts, to establish a formal training program. This will allow the company to continue to have a well trained professional



In the middle of the Ferdinand Valley resides a major manufacturing facility, Pacific Cabinets, Inc.



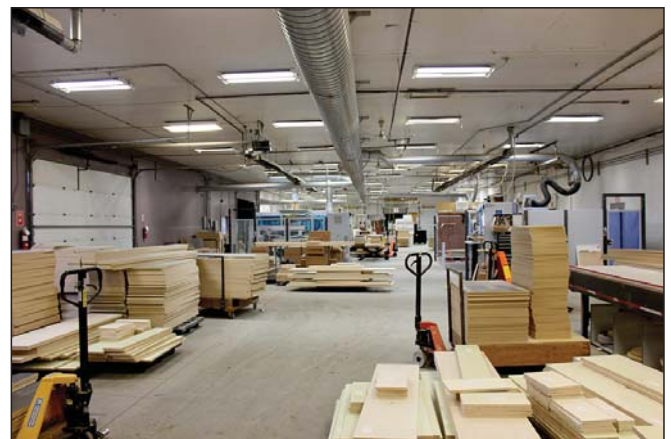
The casework facility is equipped with modern technology that allows the company to work in a safe and productive manner.

for any size project. In 2016 the company built an additional 20,000 square foot building to handle the manufacturing of Corian countertops, plastic laminate tops, medical headwalls, and all of the highly custom items such as nurse stations that PCI manufactures for healthcare and laboratory projects. By removing these functions from the existing plant and automating processes, the existing facility increased cabinet production by approximately 30 percent.

Providing accurate project estimates is one of the most complex and important aspects of a successful project. Thirty-nine years of business with a single owner allows the team to draw from past experience and provide maximum refinement of its pricing structures. Estimators use their attention to detail, quality calculations, and savvy common sense and combine it with

staff hired from local communities. The intent of this formalized training is to bridge the gap between education and industry. Training of this nature offers additional opportunities for local students to seek a career in a manufacturing related business. Company CEO, Steve Frei, is excited about this training as it "goes a long way to accomplish this goal."

State-of-the-art technology is evident throughout the manufacturing plant. Factory machines produce efficient production cycles, unique designs, and the ability to meet exacting specifications. Plant layout provides the flexibility to handle multiple fast track orders simultaneously. This allows the company to remain competitive and produce premium work



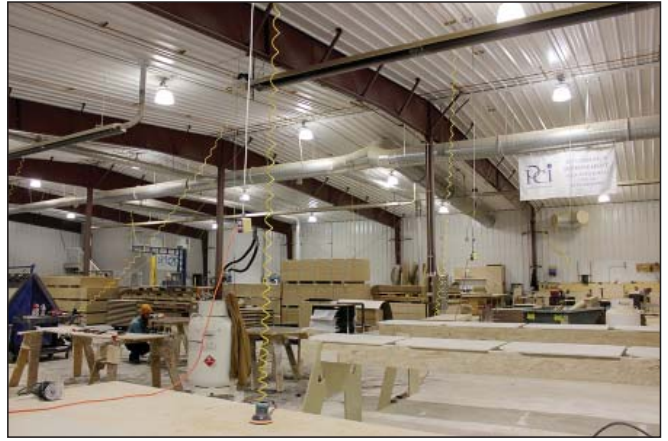
Pacific Cabinet's production shop has a clean linear flow with lean manufacturing principles.

CONTINUED ON NEXT PAGE

Pacific Cabinets, Inc. *continued from page 8*

custom software to provide bid results that meet the exacting standards of the industry.

PCI believes guiding customers through pre-design considerations saves time, matches the specified product with client's needs, and makes casework and millwork part of the budget solution, rather than part of the problem. Products are designed to allow easy coordination with electricians, plumbers, and other trades that are integral in the construction project. Customers can be confident that the final design will integrate itself with the entire project.



Pacific Cabinets' commitment to continuous improvement provides an environment of productivity and high quality products.



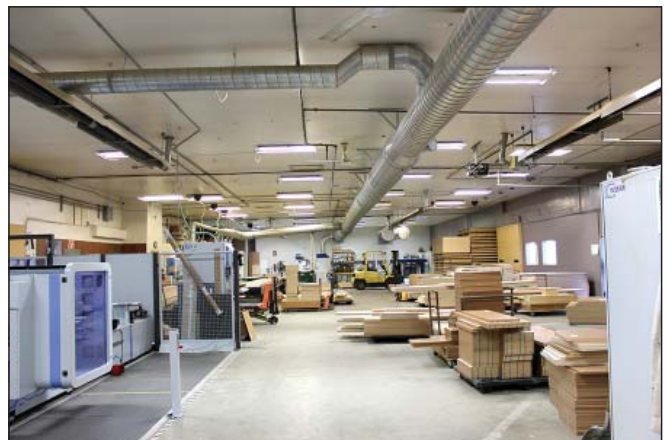
View of the new custom building from the second-floor office.

Laboratory equipment and materials are expensive. PCI's vast experience building labs reduces the hassle factor by knowing details like where to locate removable panels and how much room is required for mechanical and electrical chases. PCI is experienced working with a variety of unique materials required to meet the exacting standards of the market, such as, combating bacteria and germ accumulation in medical facilities.

PCI has solutions for seismic requirements, extremely high moisture areas, and high wear conditions. There are laminate countertops with a phenolic backer sheet on the underside to

allow for easy cleaning and moisture resistance. The phenolic backing provides a balanced panel construction that also resists warping. If specified, all shelving can be edge-banded on all four edges.

Today's architects and contractors are faced with the formidable challenge of providing buildings with functional casework and millwork in a style that nourishes the desire to learn, and keeps up with technological changes. PCI incorporates a modular system that allows flexibility and with minimal expense can provide future changes as needed. PCI keeps up-to-date with the latest materials, production methods, hardware, and designs in order to provide customers with a full tool chest to help produce the perfect casework. Virtual fabrication software can transform drawings to finished product so that the client will know what the finished product will look like...before it's finished. The state-of-the-art, in-house manufacturing system improves quality control and decreases lead times.



Pacific Cabinets uses bar coding and part labels to produce just-in-time custom products unique to each jobsite.

Keeping up with PCI's vision for the future has brought change for the employees. As of January 2018, the employees now own stock in the company. The new structure will insure that the company continues to thrive and prosper for many years to come. There is nothing more motivating than to know you have "skin in the game," it has a direct effect on profitability and employee satisfaction.

Pacific Cabinets, Inc., can be reached at: Phone (208) 962-5546
PO Box 81, 2010 Front Street, Ferdinand, Idaho 83526-0081
<http://www.pacificcabinets.com>