

# Conrad Forest Products

North Bend, Oregon

TPM Member Since  
September 2011



Conrad Forest Products (CFP) was a pioneer in the pressure treatment of wood products. The company began in 1958 providing durability to common species of wood and has continued to evolve. Today the capabilities, technologies, products and services mark Conrad Forest Products as a seasoned wood preservation company. The company takes pride in producing environmentally beneficial building materials in an environmentally sound manner.

Early in the history of the company - at about the time of the first Earth Day - it made a commitment to its employees, community, and the environment to provide its service in an environmentally sound and scientific way. Conrad Forest Products works to: 1.) meet or exceed all



*New Noaa facility, Newport, OR*



*Copper Azole treated pergola*

environmental regulations; 2.) continually improve its standards of treatment; 3.) introduce technological advancements to its manufacturing process; 4.) reduce toxic substances where possible; and 5.) review its products and procedures on an ongoing basis. The guiding principle of the company is “common sense environmentalism,” by which it means sound environmental practice based on supported scientific data and consideration of practical alternatives.

CFP is mindful of the environment in its manufacturing operations. CFP lumber comes from sustained yield forests and tree farms, such as Weyerhaeuser’s Mt. St. Helens Tree Farm. CFP facilities comply fully with EPA regulations, and even exceed EPA requirements. The lumberyard is paved, and it stores material under cover. CFP supplies wood that conforms to Best

Management Practices and, when requested, will ship material covered with a paper wrap.

CFP offers an inventory of building products in both commercial and residential construction. The wide variety of building materials is available for projects, literally from the ground up. Customers with any type of project, such as building a deck or a patio, a fence, a pole barn, a room addition, a mile of new crossies, piling for a dock, or utility poles where wood peckers are a problem, will find the products that meet their needs. Conrad Forest Products can assure the completion of the customers project due to its extensive inventories of “fresh cut” premium treated and untreated lumber, timbers, and plywood. Choices ranging from glu-lams, free of heart no wane timbers to ACX plywood panels are available. Other items are available by special order.



*ACZA piling*

**Featured Member** continued from page 8



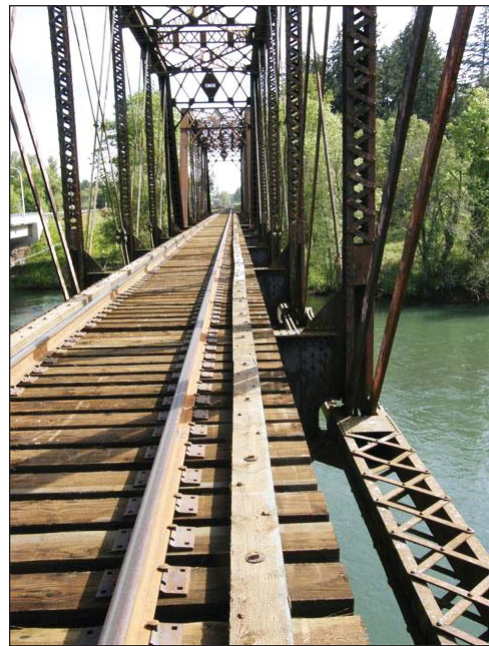
*ACZA pilings and docks, Coos Bay, Oregon*

CFP is the world's largest producer of treated Douglas Fir that conforms to standards of the American Wood-Preservers' Association. It also preserves western hemlock, hem-fir, ponderosa pine, and other species. The product line includes lumber, timbers, posts, piling, plywood, and glue-laminated members, pressure-treated with one of four preservative formulations. The company also supplies untreated lumber, plywood, and beams. Conrad Forest Products serves the industrial, utility pole, heavy construction, marine, rail and retail markets in long-lasting building materials where wood destroying organisms exist or may be a threat.

The company uses four different waterborne preservatives Wolmanized®: Heavy Duty, Chemonite® (ACZA), Wolmanized® Residential Outdoor Wood, SillBor®/FrameGuard®, and Dricon

Fire Retardant. With this variety the company can meet the needs of whatever wood application is required.

In addition to its large inventory of varied products, the company can meet the specialized needs of a client who has individual requirements. The facilities and expertise are available to treat client materials, kiln drying, precision end trimming, custom remanufacturing and special packaging. With a new generation of dehumidification kilns, CFP can offer Kiln-dried treated lumber and plywood. Customers can get those hard-to-find items, like 1x2-16' to 14x36-60' beams. Custom milling is a CFP specialty...



*ACZA Railroad ties and bridge*

precision end trimming, drilling and planing are also available for items like crane pads, decorative posts, bridges, docks and light posts. Drafting, shop drawings and engineering can be provided upon request.



*CA-C nature path walkway*

The North Bend and Rainier, Oregon plants are located in the heart of the Pacific coastal forests, near the world-wide shipping centers of the International Ports of Coos Bay and Portland, Oregon. The Arbuckle, California plant is centrally located just off I-5 for service to all California markets. Conrad Forest Products distributes to the entire United States and worldwide to Asia, Japan, the South Pacific, and Europe and can transport via truck, rail, barge, and/or ship.

It is the goal of Conrad Forest Products to provide the right product for the right job at a fair price.

**Conrad Forest Products** can be reached at:  
68765 Wildwood Road, North Bend, Oregon 97459  
Phone (800) 356-7146 [www.conradfp.com](http://www.conradfp.com)